

# Jennifer Dunn Jones Early Childhood Center of Bishop Walsh School 2020-2021 School Year Plan



# Health and Safety



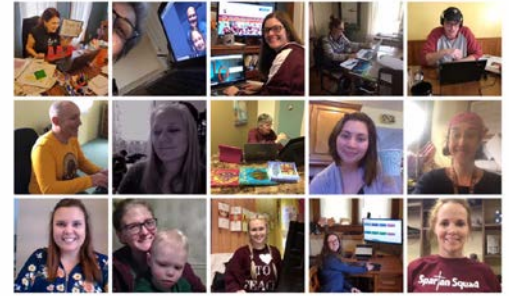
- The number of visitors at the center will be dramatically limited. Visitors will not be allowed to drop off items that students have forgotten at home. Parents may only walk their students to the front door of the center. In-person meetings and conferences must be pre-scheduled. All visitors must wear masks.
- A daily electronic health screening will be completed by parents/guardians prior to the student entering the school building.
- Parents will be required to complete the Assumption of Risk Statement and the Parent Acknowledgement and Agreement Regarding COVID-19 Protocols on School Admin.
- Once in the school building, students' temperatures will be taken by a teacher at the door.
- Anyone registering a temperature greater than 100.0 degrees will be required to stay home.
- All faculty, staff, and students will be required to wear a mask while indoors and whenever social distancing is not possible outdoors.
  - The mask must fit each child appropriately, covering both the nose and the mouth.
  - Any solid colored and/or patterned mask is acceptable. A mask featuring characters (i.e. Mickey Mouse, Paw Patrol, etc.) is acceptable.
  - Students will be given "mask breaks" during the school day.
  - Families must provide their own masks. We encourage each student to have multiple washable masks available at home to ensure a clean mask can be worn to school every day. Each student should keep at least one extra mask in his/her backpack in a reusable plastic bag.
  - Face shields may be used if medically necessary. A doctor's note is required.
- Hand sanitizer will be available throughout the building.
- Napping is allowed without masks with the cots spaced 6 feet apart. Each student will have a designated cot and area for napping.
- An isolation area will be set up in on the front porch for those who are experiencing symptoms of COVID-19.
- Students and staff whose possible exposure to COVID-19 is being investigated, and those who are exhibiting symptoms, will be required to be tested in accordance with recommendations of the Maryland and Allegany County health departments. Notifications about potential exposures will be sent home.

# Facility Management



- To mitigate the transmission of the COVID-19 virus in school, cleaning and disinfection protocols have been established and will be implemented. Bishop Walsh School and the JDJECC are utilizing a two-step disinfecting and protecting process to disinfect and protect all surfaces using Sniper disinfectant and Endure surface protectant. The Endure surface protectant is a stable, bacteriostatic product that mechanically kills both viruses and bacteria on contact, allowing for 90 days of persistent protection against viruses and bacteria.
- Cleaning and disinfecting will occur daily, with increased attention to frequently touched surfaces (e.g. door handles, sink handles, desks, chairs, stair railings).
- Signs will be posted about mandatory masks, proper handwashing, and social distancing.
- Classroom setups will be modified so that students are at least three feet apart, following the spacing recommendations of the American Academy of Pediatrics and the Centers for Disease Control.
  - Non-essential classroom items have been removed, such as extra bookcases or filing cabinets.
- The Cafeteria will be used for lunch. The students will maintain a distance of six feet apart while eating.
- In restrooms, only every other fixture (sink, toilet, etc.) will be used and clearly marked.
- Communal spaces will be closed.
- When weather permits, windows should be opened to increase circulation of outdoor air.
- Students will have daily outdoor recess as the weather permits.
  - Enough space will be provided to maintain proper social distancing.
  - Individual or socially distanced recess activities will be planned.
- Water fountains will be closed. Students may carry personal water bottles.
- Sinks are in separate areas.

# Learning Experience



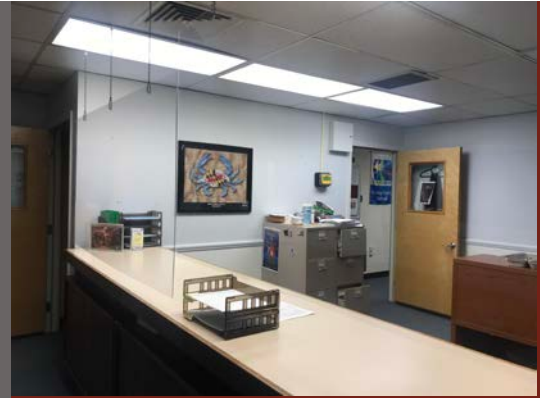
- Two modes of learning, in-person and virtual, have been established, along with archdiocese guidance and recommended instructional minutes.
- Families must fill out an intent form with their choice for the student's mode of learning. This decision would hold for at least the first marking period of the year. There are no additional costs if you choose distance learning only for your child, and every student will be a vital member of our Spartan family.
- All archdiocesan schools, including Bishop Walsh, added the equivalent of five instructional days to their 2020-21 academic calendar. The added time came from eliminating days off of school and the change of half days to full days. These days were added to provide teachers and students extra time for review, remediation, and enrichment.
- All teachers will be provided targeted professional development and guidance on technology and instructional practices.
- Bishop Walsh School and the JDJECC will safely integrate our Catholic identity in the school. This may include virtual Masses and prayer services. Daily prayer will continue.
- The school will continue to support our students' social and emotional needs. An additional guidance counselor has been hired to help address these needs.
- Student accommodation plans will be modified as needed.

# Technology



- Teachers will continue to use the Google Suite for Education. This includes Classroom, Meet, Docs, Sheets, and other apps.
- Virtual instruction will be both synchronous (live) and asynchronous (recorded) to meet the needs of all of our families.
- Teachers will receive training on synchronous and asynchronous learning, virtual best practices, and other educational technology.
- The school has a synchronous one gigabit internet connection, which will easily allow multiple streams into and out of the building without any disruption.
- Wifi access points have been updated throughout the building.
- Teachers will receive new webcam-enabled laptops to meet the instructional needs of all of our students.
- Bishop Walsh School and the JDJECC are committed to enhancing our technology as grant funding arrives.

# Arrival, Dismissal, and Transportation



- The school day will begin at 8:45 am and end at 2:30 pm, like normal.
- Parents may only walk their students to the door of the center.
- A daily electronic health screening will be completed by parents/guardians prior to the student entering the school building.
- Students will arrive at the normal entrance and have their temperature taken and book bags stored away for them.
- All students should try to be in the building by no later than 8:45 every day. Otherwise, they may want to plan on distance learning that day.
  - Excessive tardiness will result disrupt learning and teachers will not be opening doors after school starts.
  - Please try to schedule appointments during after-school hours.
- Students who attend before/after care must be registered for that program. Drop-ins are not allowed since space is limited. The program is only open to registered students of the JDJECC.
- Before care starts at 7:30am and runs until 8:45. After care starts at 2:30pm and ends at 4:30pm. The charge is \$5 per hour for both before and after school care and the student(s) must be registered to attend.
- All parents and students must plan to leave campus immediately after dismissal. Please no congregating afterward to speak to the teachers. Email or phone conferences are preferred.